

## 8. Mechanical :

8.1 Weight : 288 g Typical

8.2 Cable Type : Black UL1185 AWG16

( Wire + Plug )

Plug :  $\phi 5.5 * \phi 2.1 * 9.5 \text{mm}$

( Tuning Fork & Cannelure )

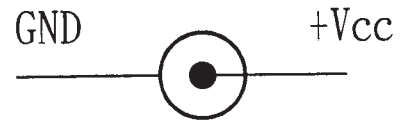
Cable Drawing No. : ADT-1749

8.3 Cable Length : 1500mm

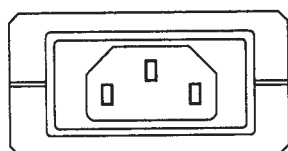
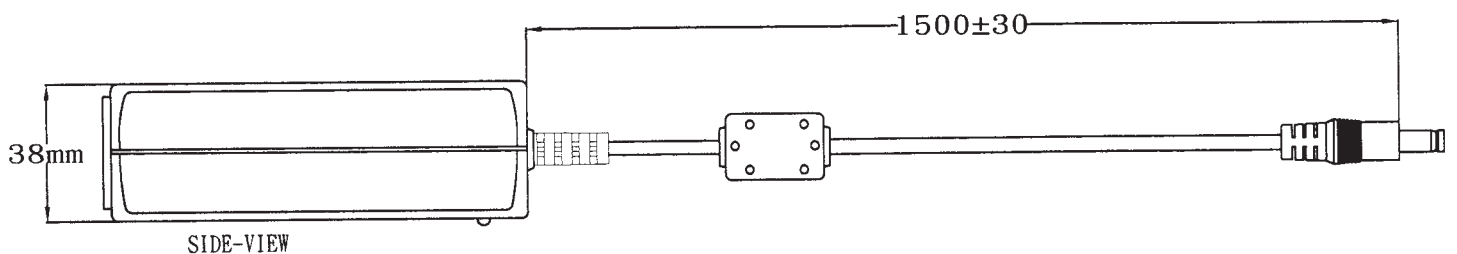
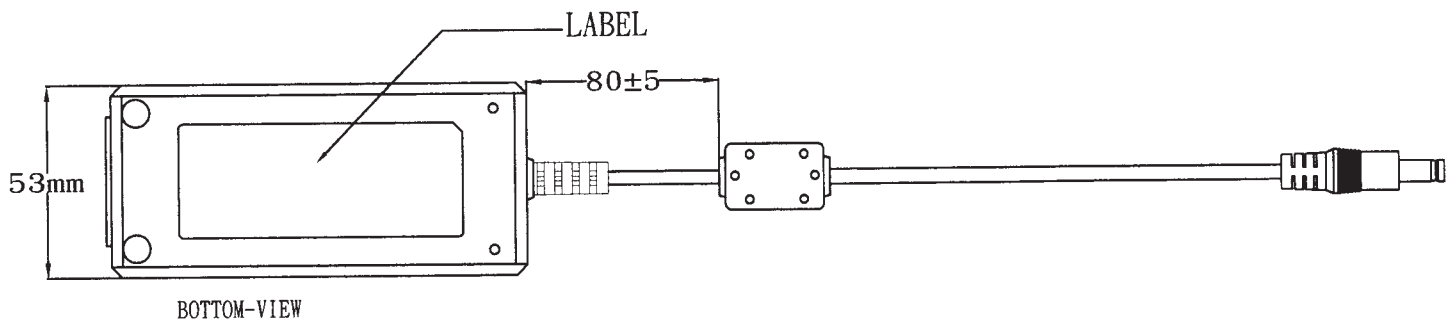
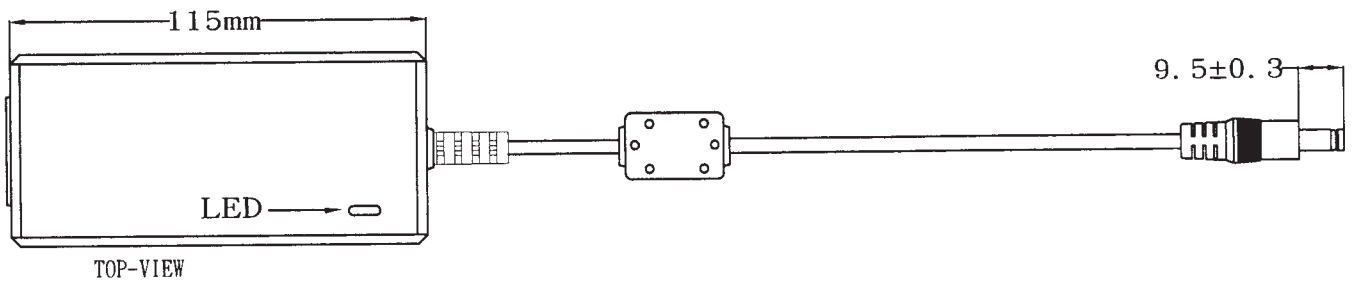
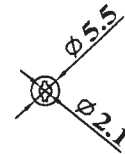
8.4 Case Dimension : 115mm(L)\*53mm(W)\*38mm(H)

8.5 Material Flammability : UL 94V-0

8.6 External Appearance : As drawing below ( Scale  $\rightarrow$  mm )

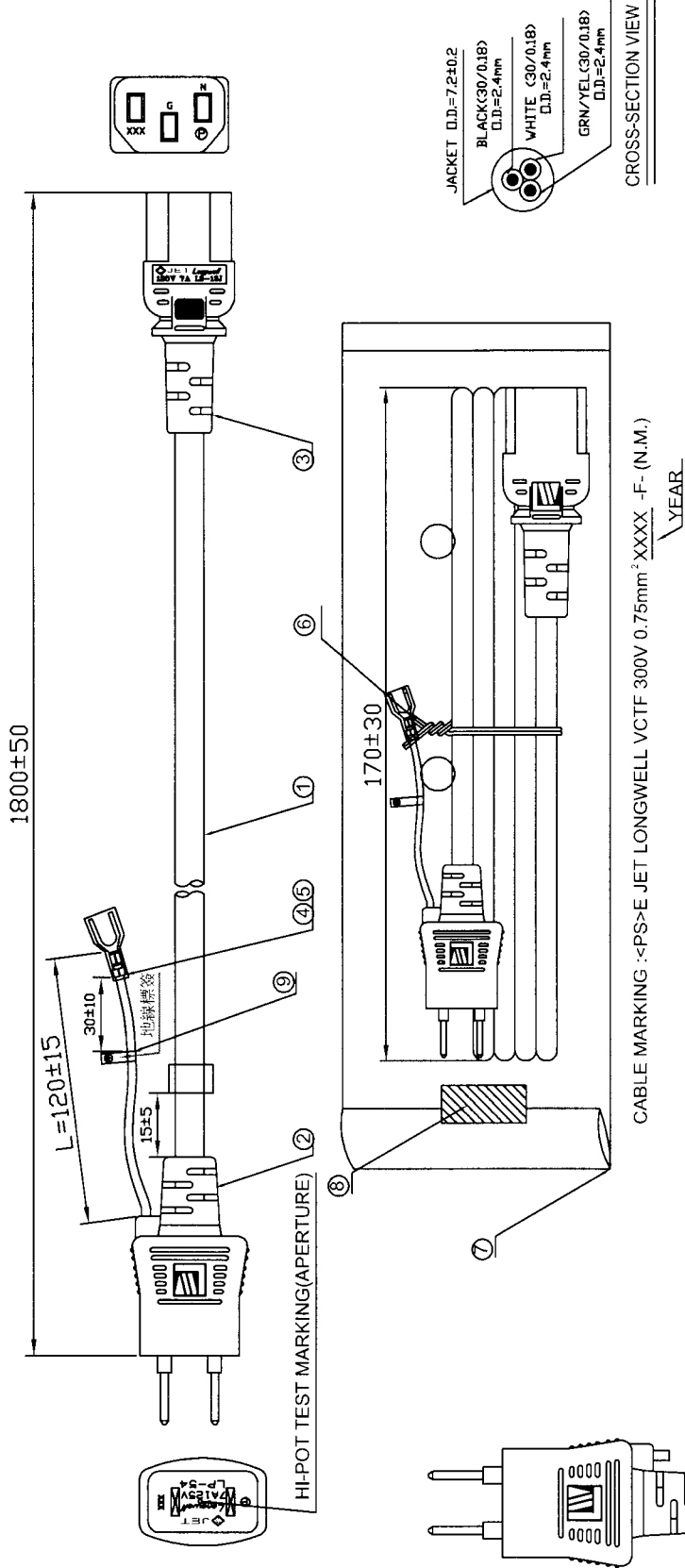


Output Cable Plug Pin Assignment



FRONT-VIEW

FIGURE 1



CABLE MARKING : <PS>E JET LONGWELL VCTF 300V 0.75mm<sup>2</sup> XXXX -F- (N.M.) YEAR

- NOTES:
- 1:CABLE: THE CORD SHALL COMPLY WITH ARTICLE 1 OF THE TECHNICAL REQUIREMENTS OF THE METI ORDINANCE APPENDIX 1 SECTIONS (1),(6),(10).
  - 2:PLUG: THE MOLDED PLUG SHALL COMPLY WITH ARTICLE 1 OF THE TECHNICAL REQUIREMENTS OF THE METI ORDINANCE APPENDIX 4 SECTION 1 & 6.
  - 3:CONNECTOR: THE MOLDED CONNECTOR SHALL COMPLY WITH ARTICLE 1 OF THE TECHNICAL REQUIREMENTS OF THE METI ORDINANCE APPENDIX 4 SECTION 1 & 6.
  - 4.THE PRODUCT SHALL BE TESTED 100% FOR ALL SAFETY ELECTRICAL ITEMS.
  - 5.COLOR:BLACK (LONGWELL P/N:0A)

ITEM	DESCRIPTION	Q'TY	U/M
9	LABEL	1	EA
8	TAPE	1	EA
7	PE BAG	1	EA
6	MINI TIE	1	EA
5	TUBE:J25030(JH)	1	EA
4	TERMINAL: J655BS-2(JH)	1	EA
3	(MOLDED CONNECTOR) LS-13J 7A/125V	1	EA
2	(MOLDED PLUG) LP-54 7A/125V	1	EA
1	VCTF 0.75mm <sup>2</sup> 3C BLACK N.M. 5'11"	1	EA

Approved by:	C.F.Y
Checked by:	Tony.Chen
Drawn by:	Lingling.Pei
Date:	05/13/2010
Scale:	X Unit: mm

Customer:	AIKO
Customer P/N:	
Longwell P/N:	PT8GKQPAL0A-05B
DWG. NO.:	GW-06126
REV	1 OF 1
REV	1

REV	ECN NO.	DESCRIPTION	APPR.	DATE
1		Initial Release		05/13/2010